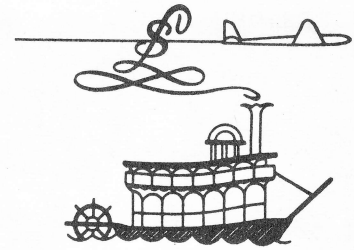


# St. Louis Section NEWSLETTER

*Dominiguez (Acadm)*



1969 - 1970

ISSUE NO. 1

OCTOBER 1969

EDITOR: PAUL E. FREY

## INCOMING CHAIRMAN'S MESSAGE

It is indeed a privilege and an honor to have the opportunity to serve as Chairman of the ACSM St. Louis Section. It is also recognized that the inherent responsibilities must be accepted with vigor and enthusiasm.



Willard Tucker

Your Board of Directors, Officers and Committee Chairmen convened for the first board meeting September 4th. This meeting was one of the most enthusiastic in which I have had the opportunity to participate. From this meeting came the following basic section objectives for the coming year.

### MEMBERSHIP

1. Develop a membership drive that will identify the advantages of ACSM to all operating segments within ACIC. Expand the drive to include related surveying, mapping, industrial and educational activities with the local charter area.
2. Establish a goal of 300 members by February 1, 1970.
3. Establish procedures that will insure that each member is contacted for local dues.
4. Develop plans that are consistent with the National ACSM Membership Development Committee objectives.

### PROGRAMS

1. Plan four technical meetings in addition to the annual June Business Meeting (Installation of Officers). Supplement the meetings with appropriate displays.
2. Select programs covering a wide range of activities that may include technical development, general interest, self-improvement, related historical accomplishments, or other allied fields that would have broad appeal to the ACSM membership.
3. Continue to individualize the ACSM by minimizing co-sponsorship of meetings with other societies.

### ACSM NEWSLETTERS

1. Publish the newsletter at least four times a year, scheduled to provide maximum information to the members.
2. Supplement information dissemination with fliers to the general membership as required.
3. Solicit advertisements that will offset cost of newsletter publication.

### PUBLICITY

Provide maximum support for the activities of the local section through a variety of promotional media - National Journal, local radio and TV stations, pertinent fliers, Orientor, ACSM Newsletter, etc.

### CARTOGRAPHIC BROCHURE

Determine the feasibility of developing and publishing an Information Brochure on professional cartography.

### TECHNICAL AWARDS

Review the existing criteria to determine the feasibility of reinstating this program.

Successful achievement of the basic goals will require the enthusiastic and dedicated support of each ACSM Officer, Director, Committee Chairman and to a large degree each member of the St. Louis Section. The necessity to meet the basic goals this year and for that matter, the next two years, is to insure that the ACSM St. Louis Section is a dynamic organization ready to meet the challenges with the Local ASP Region to host the National ACSM/ASP Convention to be held in St. Louis, 1974.

Printed elsewhere in this Newsletter is a list of "Reasons to Join a Professional or Technical Society" from the National ACSM. As each of us review this list and reaffirm our own role in the local section, I feel confident we can not only achieve the basic objectives for the coming year, but will also lay the ground work for a growing broad-based active membership in the ACSM St. Louis Section in the years ahead.

## ACSM St. Louis Section 1969-1970 Directors, Officers and Committee Chairmen

New officers and directors were installed on June 25, 1969 at the annual picnic and Beer Bash in Carondelet Park, St. Louis, Missouri.

Newly elected officers for a one year term are:

Mr. Willard Tucker - Chairman  
Dr. William Mahoney - Vice-Chairman

Newly elected directors for a two year term are:

Mr. Philip Rahall  
Mr. Kenneth Sime  
Dr. Charles Martin

Directors remaining in office for one more year are:

Mr. John Kristman  
Mr. Sidney Sherman

Additional appointments of officers and committee chairman were made at a meeting of the Executive Board on September 4, 1969 and are as follows:

Mrs. Shirley Sostman - Secretary  
Mr. Warren Wolfrom - Treasurer  
Mr. Paul Frey - Reporter  
Mr. Arthur Ziegler - Membership  
Mr. McKinley Stephens - Program  
Mr. Harold Bartels - Publicity

OFFICERS, DIRECTORS, AND COMMITTEE CHAIRMEN  
OF THE ST. LOUIS SECTION ACSM FOR 1969 - 1970.



Front row seated (left to right): Philip Rahall, Sidney Sherman, Dr. Charles Martin, Ken Sime and John Kristmann. Standing (left to right): Harold Bartels, Arthur Zeigler, Warren Wolfrom, Shirley Sostman, Willard Tucker, Dr. William Mahoney, Paul Frey and McKinley Stephens.

## ACSM MEETING ST. LOUIS SECTION

The next scheduled meeting of the ACSM will be Thursday, November 6, 1969 at the ACIC cafeteria. The featured guest speaker will be Tom Caldwell ACDBN and the subject will be "ACIC charts go Mini - (miniaturized on film strips that is)". Tom Caldwell and friends (Tom's friends will be in miniskirts) will give a presentation on visual pilot displays, and will include the F111 A7 projected map display, Horizontal Situation displays and the SACOPS - 70mm film chip system.

A ham and beef buffet is featured. Price of the ticket is \$3.50 and includes cocktails. Starting time is 4:45 pm; serving time is 6:00 pm.

Look for posters on the bulletin boards for the ACSM representatives to contact for purchase of tickets. Mark your calendar now and plan to attend for an enjoyable evening.

## OUTGOING CHAIRMAN'S MESSAGE

It was my pleasure and I feel very honored to have had the opportunity to serve as Chairman of the St. Louis Section of the ACSM. If I may be pardoned for being redundant, I must say that a year passes all too fast and some of the objectives established at the beginning of the year were not fully realized. I say this as a word of warning to the outstanding group of people who are at the helm for this coming year. I am sure they will heed this advice and the 1969-1970 year will be a banner one.



Kenneth T. Sime

We are fortunate to have here, in the St. Louis Area, several very good Professional and Scientific Societies. ACSM, through its Cartographic Division, provides all of us in the Mapping and Charting Profession, the opportunity to keep pace with what is happening and to broaden our scope of knowledge. Of more importance, it gives us an opportunity to participate in and contribute to the improvement and enlargement of the Cartographic Profession.

My thanks to all the Committee Chairmen and their Members the Board of Directors and the Officers of the 1968-1969 ACSM for their loyal support during my term of Office.

## ACSM TREASURER'S REPORT

Cash on hand as of 6/4/69	\$891.97
Receipts:	
Local dues	\$67.50    67.50
	\$959.47
Disbursements:	
Artcraft Co. for Newsletter	\$50.00
Picnic	15.68
Post Office box	6.00
	\$71.68    71.68
Cash on hand	\$887.79

Respectfully Submitted

Warren J. Wolfrom, Treasurer

## FINAL PROGRAM-1969

The next meeting of the St. Louis Section ACSM is tentatively scheduled for early December and will feature a presentation by Mr. Mert Davies of the Rand Corporation on the Mars 69 Fly-By. Plan to attend this one! Time and place will be announced soon.

## VERY INTERESTING



CALCOMP PLOTTERS by Patrick Reed

ACIC recently increased its ability to produce computer assisted graphic displays with the addition of the model 718 CalComp Digital Flatbed Plotter. This new plotter, which has an available plotting area dimensioned 54 x 72 inches, is driven by a magnetic tape created on the IBM 7094. Each of the instructions contained on this tape causes the plotter to move in one of 24 possible directions with the pen either up or down. These 24 directions are the various combinations of the basic steps the plotter can take: .05 or .025 mm in either x or y.

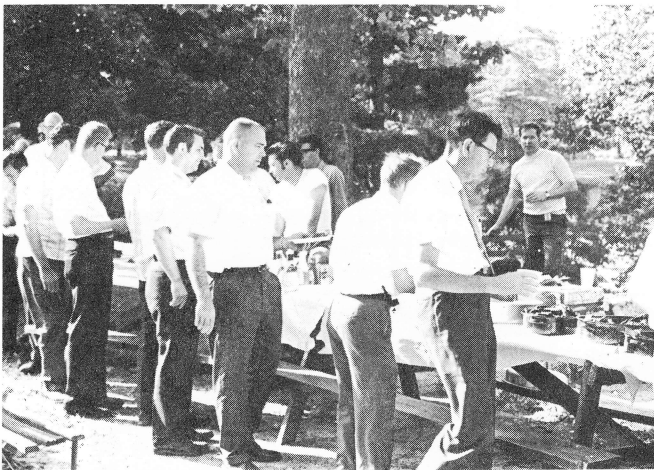
The model 718 augments the plotting capabilities of the model 563 CalComp Digital Drum Plotter which has been utilized by ACIC 7094 users for several years. The use of the model 563 was somewhat restricted by its 29.5 inch by 120 feet plotting area, its limit of paper and one ball point pen as plotting materials, and its limit of eight possible directions of pen movement (combinations of the .1 mm basic step in x and y). The smaller step sized and the additional movement directions enable the 718 to produce smoother curves and more accurate plots than were possible with the 563.

A user supplied 7094 program can easily use the CalComp basic subroutines to plot symbols, numbers, letters, lines, and graduated axes for either of the two plotters.

(CalComp Plotters Cont. on page 3)



**BEER BASH AND OPEN AIR BARBECUE HELD AT CARONDOLET PARK ON JUNE 25, 1969.**



(CalComp Plotters Cont. from page 2)

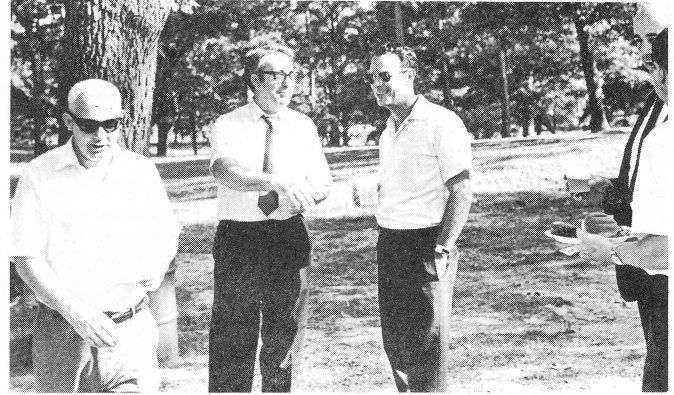
A user program utilizing the model 718 can select any one of four possible pens for plotting and can change this selection within the plot. The four pens normally hold different colors of ball point ink, but, by prior arrangements, pens with liquid ink in varying colors/line widths can be made available. The plotting material used may be any material receptive to the ink utilized. Experiments using a scribing tool instead of ink are being conducted with optimistic but as yet inconclusive results.

Equivalent sets of basic CalComp subroutines will be available for both models of plotters on the UNIVAC 1108 computer whenever it becomes operational at ACIC.

For further information concerning either the model 563 or 718, contact ACDMC-T at AM8-4956.

## **ACSM/ASP NATIONAL CONVENTION IN ST. LOUIS 1974**

St. Louis has been selected to Host the National ACSM/ASP Convention in March 1974. This decision was reached by the ACSM and the ASP Executive Board during the recent Semi-annual ACSM/ASP Convnetion in Portland, Oregon. Mr. Gordon E. Stine presented the St. Louis Bid with an excellent flip sheet briefing that was jointly developed by Local ACSM/ASP members. Included in his briefing were letters of support from the Rolla and Kansas City ACSM Sections printed elsewhere in this Newsletter. The selection of St. Louis for 1974 represents the untiring efforts of key ACSM and ASP members during the past few years.



In addition to the St. Louis ACSM members enjoying the gourmet delights at the beer bash and barbecue, members of the Rolla section were present:

Walter Parkinson, Chairman  
Dale Stevens, Vice-Chairman  
Charles Scott  
Richard Schwab  
Lee Suarez

## **Rolla and Kansas City Support St. Louis in Bid for 1974 Convention**

Dear Mr. Tucker,

Rolla, Missouri

Our section Executive Board voted unanimously today to give you our wholehearted support in your efforts to obtain the 1974 ASP-ACSM Annual Convention for St. Louis.

Your convention committee demonstrated its ability to stage an outstanding meeting at the Semi-Annual Convention in October 1967. We feel that the "Gateway to the West" is an ideal location, affording the least travel for a majority of the delegates.

When you obtain the 1974 Annual Convention for St. Louis, our section stands ready to assist you in any way possible to make the convention the greatest one ever.

Sincerely yours,

**WALTER D. PARKINSON**  
Chairman

Western Missouri  
Eastern Kansas

Dear Chairman Tucker:

The Heart of America Section is looking forward to attending the National Convention of March 1974 in St. Louis.

We wish you success in your bid to host this convention and assure you of our support.

The officers and board members of our section, whom I have contacted, are all delighted with the idea. To the best of my knowledge, Missourians have for three times successfully hosted Mid-America Regional Conventions.

We shall certainly support your effort in any way we can.

Sincerely yours,

**ALFRED A. E. HANSEN, JR.**  
Chairman





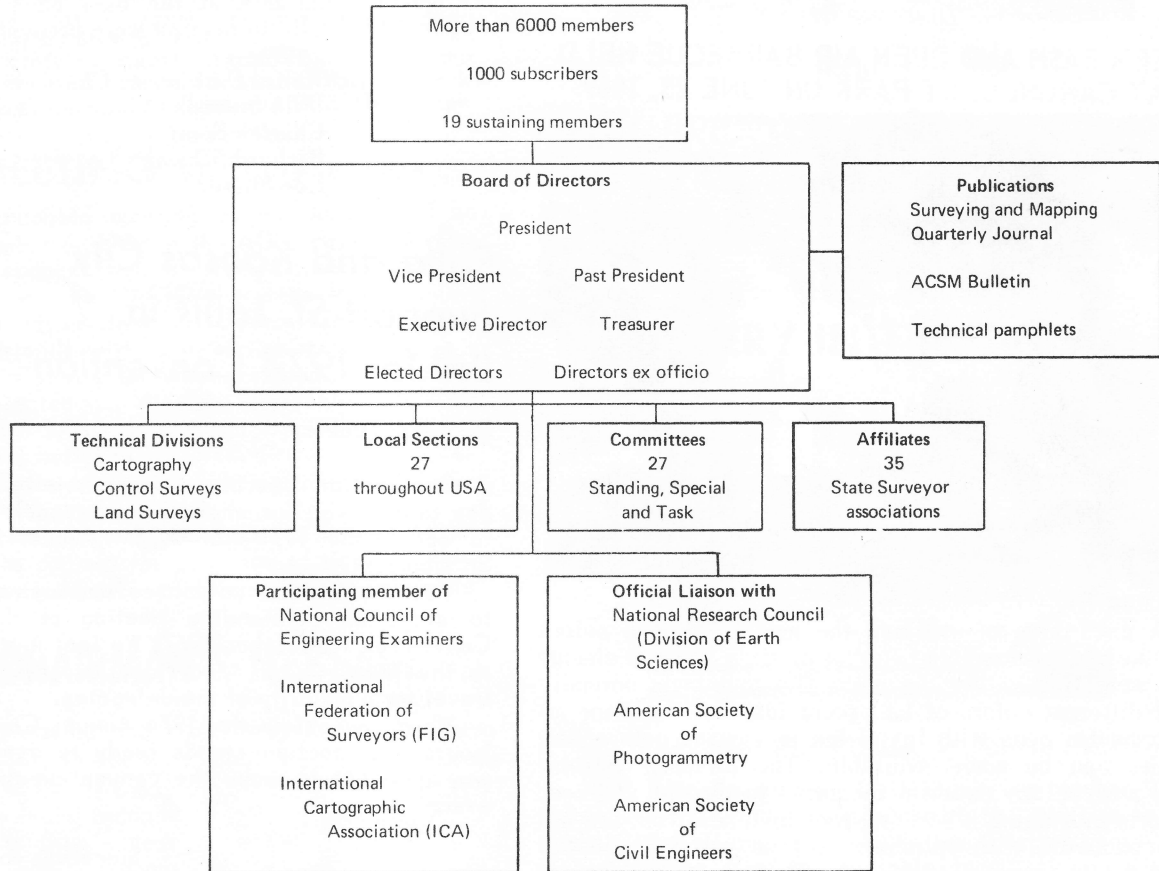
A.C.S.M.

# AMERICAN CONGRESS ON SURVEYING AND MAPPING

National Headquarters: 430 Woodward Building, 733 - 15th Street, N. W., Washington, D. C. 20005

Telephone: Area Code 202—District 7-0029

The objectives of ACSM are to: (a) advance the sciences of surveying and mapping in their several branches, in furtherance of the public welfare and in the interests of both those who use maps and surveys and those who make them, and establish a central source of reference and union for its members; (b) contribute to public education in the use of surveys, maps and charts and encourage the prosecution of basic surveying, mapping and charting programs; (c) encourage improvement of college curriculums for the teaching of all branches of surveying and mapping both in the technological sciences and the professional philosophies; (d) honor the leaders in the sciences of surveying and mapping; and (e) support a program of publications that will represent the professional and technical interests of surveying and mapping.



## Reasons to Join a Professional or Technological Society

Improvement of anything requires wisdom, patience, and persistence. Such pursuit takes time, effort, and money.

Improvement of professional stature cannot be achieved without such sacrifice and contribution of time, effort, or money.

Neither can professional or technological stature be achieved alone. Association with others who are aspiring to improve the status is necessary for the exchange of viewpoints and knowledge.

The professional and technological society is therefore necessary as a forum for exchange and comparison of individual viewpoints and ideas, and for collective strength and influence in matters of mutual agreement. It also affords a collective strength of "wisdom, persistence, effort, and money." The stronger the membership — the stronger the collective influence in any mutual interest.

Membership affords participation and voice in shaping one's future by active participation. No member can ever get more from an association than he puts into it. To put in — or to take out — one first must join the activity — one must be a member.

It just naturally follows that as the profession improves in status, both the professional and the technician are benefited, as are also those with associated interests and the public at large.

By close association through such affiliations and working with other professional and technological organizations such as the National Society of Professional Engineers, American Society of Civil Engineers, American Society for Engineering Education, Academy of Sciences, National Science Foundation, International Cartographic Association, and the International Federation of Surveyors—FIG (the Federation Internationale Geometre)—ACSM expands the influence and strength of purpose on matters of mutual pursuit, and adds strength and persuasion to the professional voice for surveying and mapping.

ACSM has served its membership since 1941. It is accepting increased responsibility for the activities of our profession. It offers an opportunity to pool our professional experience and our technical, scientific, and financial resources.

By joining ACSM a member can receive much helpful information from its publications and from its activities, in ratio to the effort expended in participation. A significant benefit and vital help is a sense of belonging; it is an instant source of professional contact, a means of consultation with fellow technologists and professionals.

ACSM is a source for varied and invaluable services to which membership is an introduction.