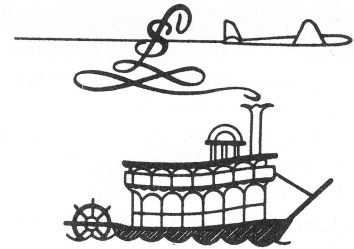




St. Louis Section NEWSLETTER



1968-69

ISSUE NO. 2

MAY 1969

EDITOR: M. ZSCHIEGNER

MR. FINNIE ELECTED TO ACSM BOARD OF DIRECTION

As a new member of the ACSM Board of Direction, Mr. Finnie attended board meetings on 14-15 March. Major items considered included:

- a. Reports of activities of the many different committees of ACSM.
- b. The budget for the next fiscal year.
- c. Actions on a multitude of new business items.

The initial Financial Plan to carry out the wide range of constructive work of ACSM required many thousands of dollars in excess of expected receipts for the year. Hard decisions were made to reduce the budget closer to expected amount of dollars available.



MR. THOMAS FINNIE

Mr. Finnie was designated as a member of the Nominating Committee for the next year and the quotation below represents guidelines that will be followed. The St. Louis Section should give particular attention to guidelines 1 and 2 in order to respond to future requests for recommendations for nominees.

"RECOMMENDATIONS FROM MARCH 14, 1969, ADDENDUM TO ANNUAL REPORT OF ACSM COMMITTEE ON FISCAL AND ADMINISTRATIVE MATTERS"

"It is recommended that the following be adopted as guidelines for the Nominating Committee:

1. That all Sections and Affiliates be invited to submit for consideration by the Nominating Committee the name of a candidate for ACSM Director.
2. That, by petition, any group of fifty (50) ACSM Members in good standing may submit for consideration of the Nominating Committee the name of a candidate for ACSM Director.
3. It is desirable that there be at least one (1) member of the academic community on every ACSM Board of Directors.
4. It is desirable to strike a proportionate numerical "balance" on the Board of Directors between members representing the private sector and those representing the public sector."

Mr. Finnie has available a full record of the minutes of

the 14-15 Mar 69 meeting should any of the membership wish to review the full proceedings.

It was agreed that the combined spring meeting of ASP/ACSM of 1974 would be held somewhere outside of Washington. St. Louis is a strong contender.

CARTOGRAPHY DIVISION BOARD MEETING

Mr. Frank E. Roth, recently elected National Director in the Cartography Division, ACSM, attended meetings of the Board of Directors at the Annual ACSM/ASP Convention held in Washington, D.C., 10-14 March 1969.

The Cartography Division is one of three Divisions in the National structure of the ACSM which has as its primary goal the advancement of the Cartography profession in the fields of mapping and charting. In accomplishing this goal, the functions of the Cartography Division encompass the



MR. FRANK ROTH

world-wide activities of Cartography. At the present time, members of the Board and representatives from the ACSM are actively participating in the International Cartographic Association, which is composed of three Commissions.

I is currently engaged in efforts to establish an international school for Cartographers. Commission II is developing a multi-lingual dictionary of terms on Cartography which will include a bibliography of references along with sample maps and projections. Commission III has been established to advance automation in Cartography.

liography of references along with sample maps and projections. Commission III has been established to advance automation in Cartography.

On the National level, the Board of Directors of the Cartography Division is currently addressing three primary objectives. They are:

1. Preparation of a manual on Cartography similar to the manual on Photogrammetry published by the American Society of Photogrammetry.
2. Improvement in the content of the ACSM Journal with more emphasis on the field of Cartography.
3. An aggressive campaign to determine steps which the Cartography Division can take to better serve the ACSM membership. In this regard Mr. Roth has been tasked with the responsibility of developing a questionnaire to be sent to ACSM Sections and Affiliates soliciting answers and comments which will serve as a guideline for the actions taken by the Board of Directors.

A subject which was discussed at some length at the Board Meetings concerned the recent increase in ACSM membership dues. Reports from the field have indicated that many members have questioned the need for this rise in dues as well as the benefits they gain by membership in the ACSM. With respect to the cause for the increase in dues, administrative expenses for the National ACSM have increased substantially over the last several years consistent with the increase in costs which have occurred in all facets of the economy. For the last several years the society has been operating with deficit spending, postponing a dues increase. This could not be continued indefinitely without jeopardizing the society. Some of the benefits which the members of ACSM have or will realize through the activities of the society include:

1. Recognition of Cartography as a professional field. This has been particularly significant for individuals employed by the government. Through the efforts of ACSM, the Civil Service Commission granted professional status to Cartographers with an attendant increase in the salaries of all employees engaged in the profession.
2. Establishment of a Scientific Pay Scale for Cartographers in the government. The ACSM played a significant role in gaining this recognition.
3. Promulgation of the Cartography profession through the national and international activities of the ACSM such as those discussed above.

Considering the benefits which members of the ACSM have received through the efforts of the society, the \$20 dues seems like a rather small recompense. This is particularly true for government employees who have reaped so many benefits through recognition of the Cartographer profession by the Civil Service Commission and the attendant pay increases.

The Board of Directors has and will continue to encourage greater participation by the ACSM members in the submission of articles for the National Journal. Much of the criticism which has been registered against the Journal because of lack of articles on mapping and charting is a direct result of the membership failing to submit articles for publication.

Mr. Roth wishes to express his appreciation to members of the St. Louis Section who supported his election to the National Board of Directors. Representation by a member of the St. Louis Section on the Board insures National recognition of the mapping and charting activities in the local area and furthers the goals of the Section.

TREASURER'S REPORT

Our present bank balance is \$1074.91. We have the majority of our funds in the Arsenal Credit Union, and a minimum amount in the checking account. The purpose for this arrangement is to gain maximum interest earnings on our money.

We presently have on hand 20 ACSM tie tack-lapel pins. These are very attractive pins and may be purchased for \$5.00 apiece. Anyone wishing to see or purchase these pins should contact the Treasurer, Bob Zimmer, extension 4381.

LOCAL HAPPENINGS

On January 14th, the first 1969 meeting of the Local ACSM

Section was held at the ACIC Cafeteria. The guest speaker was Mr. Robert Lillestrand from the Space and Defense System Group, Control Data Corporation.

Mr. Lillestrand presented a very interesting talk on his "Scientific Exploration Including Geodetic Control in the Arctic". His party flew to the North pole in a World War II single engine British cargo plane. The newer smooth pans of ice were best for landing but also were the thinnest. They landed on a 5 foot thick piece of ice. A large truck-like snow mobile was their other means of transportation. Although there was no heat in their double-wall tents, Mr.



MR. GERALD H. JOHNSON, Chief of the Chart Research Division. ACIC introduced Mr. Lillestrand of Control Data Corporation, main speaker at the January meeting.

Lillestrand said they were quite comfortable in the special clothing and double-wall sleeping bags. They often worked a 36 hour day losing all sense of time.

He spoke of pressure ridges which built up 10' to 15' high and "leads" defined as cracks that developed in the ice due to high winds experienced at the Pole.

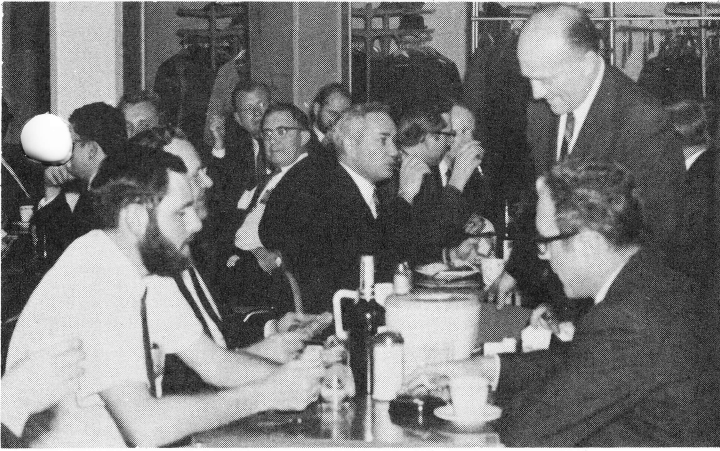
Celestial targets used for navigating and determining their position were the Sun, Moon, Venus, Jupiter, Vega, Capella, Pollux and Polaris. However, the Sun was the real work horse for astronomic measurements, although refraction of the sun's rays was a real problem.



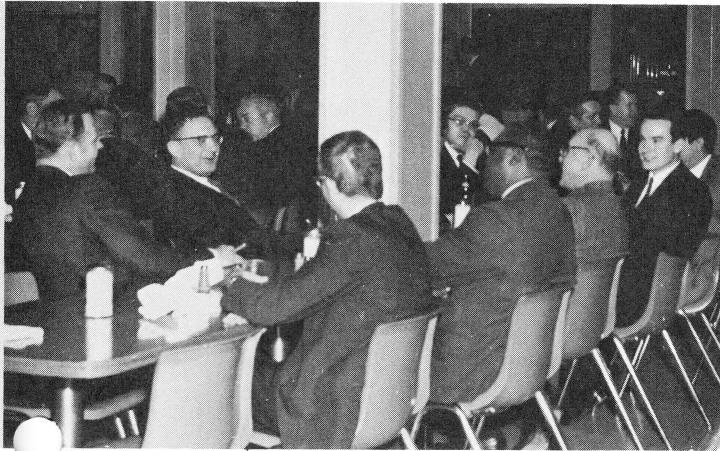
MR. KENNETH SIME, Chairman ACSM St. Louis Section, Mr. Lillestrand, Mr. Johnson and Mr. Arthur Behrens of Control Data Corporation.



January ACSM St. Louis Section Meeting



January ACSM St. Louis Section Meeting



January ACSM St. Louis Section Meeting

Mr. Lillestrand identified three problem areas in Polar Navigation:

- a. Environmental (low temperature)
- b. Human factor
- c. Navigational

Part of their expedition took place in Greenland. He spoke



MR. ROBERT LILLESTRAND

of the problems with permafrost necessitating the building of houses on stilt-type posts. The northern-most piece of land in the world, Kap Morris Jesup, is a river delta which juts out from Greenland. A large channel across the northern part of Greenland almost cuts it in two. In Project Nord, Mr. Lillestrand used WAC No's 8 and 9. He found most errors to be longitudinal errors. In speaking of ice islands, he said the shape of them

is pretty stable but to predict their route is almost impossible due to the influence of winds.

Ground control points measured by the expedition party were 5 to 10 miles off when checked against most maps of the area, although, remarkably, their positions checked with Commodore Perry's within approximately one mile.

Mr. Lillestrand pointed out that temperament and point of

view were very important in an expedition of this sort and that the leader must be willing to share in the discomforts with the rest of the group.

ACSM MEETING 8 APRIL 1969

After a social hour and tasty buffet in the south annex cafeteria, the ACSM group proceeded to the auditorium.

Mr. W. Riordan introduced Mr. Joe Steakley, the main speaker, noting his academic achievements and position at ACIC.

Mr. Steakley gave his presentation entitled "Mapping,



MR. JOE STEAKLEY, Main Speaker.

Charting and Geodesy for the Future". The theme of his talk centered on significant technological break-throughs being made in navigation and guidance which appear to be establishing a trend toward a requirement for totally new MC&G products. Onboard computer power in new aircraft and missiles is bringing about a change in navigation chart requirements, from the familiar printed graphics to digital representations of topographic data. He described significant new Air Force weapon systems and the ACIC actions and plans to meet new MC&G product requirements to support these systems.

Mr. Ken Sime introduced Mr. Oscar Brinks, Chairman ASP and Mr. Sid Tischler, Chief Production and Distribution Plant, in the audience. Next to be introduced was Mr. Charles Andregg, visiting National Chairman, ACSM.



MR. CHARLES ANDREGG, National Chairman, ACSM.

Mr. Andregg spoke briefly on the various divisions of the national organization and their functions, noting the changes taking place and the interrelationship of these functions. He noted the rapid pace of technology and the expansion of knowledge. Also mentioned

was the dues increase to cover increased operating cost. Papers from the annual and semi-annual conventions will be available free of charge to the members. A tight reign will be held on the budget to maintain the current dues are still well below those of many other professional societies.

The evening was completed with a very interesting movie on the Apollo 8 mission, brought in for our viewing by Mr. Andregg.



April Meeting



April Meeting

"MAC" TO RETIRE

Mr. Thomas J. "Mac" McLaughlin, fisherman, hunter and horticulturist will retire from ACIC 1 June 1969 after over 35 years of government service - 16 years at ACIC. While at ACIC, Mr. McLaughlin worked in the Photogrammetry, Cartography, Missile Support and Research Divisions.

Mac came to ACIC from the Department of Agriculture, Soil Conservation service, with home office in Beltsville, Maryland. In this position, he spent a number of years in field work (surveying and editing). He also worked in the Coastal Geodetic Survey and the Census Bureau of the Department of Commerce, and in the American Battle Monument Commission, Historical Section.

He is a member of both the ASP and ACSM Societies. Mac has been an active ticket seller, has assisted with various tasks at the technical meetings, and has given considerable time and effort to committee work for the joint St. Louis ASP-ACSM conventions.

He and his wife, Virginia, will reside in Seacane, Pennsylvania, a suburb of Philadelphia, near his family.

SENIOR AREA SPECIALIST DIES

Mrs. Lois Irene Birge, Senior Area Specialist in the Africa Section of the Chart Research Division, died in the St. Anthony Hospital, Oklahoma City, Oklahoma. Her death occurred on 24 March 1969 after a short illness. She is survived by a daughter and a brother who reside in Oklahoma.

Mrs. Birge was born in Seattle, Washington; her earlier years were spent in Tulsa, Oklahoma where she finished high school. She matriculated at the University of Oklahoma, Norman, Oklahoma where she received her Bachelor of Arts Degree. Lois was a school teacher for seven years prior to coming to work for the Chart Center in September 1963. Upon completion of the Cartographic Training Course, she was assigned to the Chart Research Division in March 1964. There she worked in the capacity of a Cartographer and Senior Area Specialist, receiving an Outstanding Award in 1967 for her accomplishments.

Mrs. Birge was a past member of the Society of Photogrammetry and an active member of the American Congress of Surveying and Mapping. Her pleasant disposition and cooperative spirit will be long remembered by her co-workers and associates.